

# SPRING 2023 LITERACY FREE SERVICES

for Adult Learners at  
Middle Country Public Library

**LITERACY HOURS: Wed. 6-8:30pm; Sat. 9:30am-4:30pm**

## **ENGLISH CLASS: BASIC - SATURDAYS (A539)\***

APRIL 8, 15, 22, 29, MAY 6, 13, 20, 27, JUNE 3, 10 AT 10-11:30AM  
CENTEREACH - FOUNDATION ROOM

## **ENGLISH CLASS: BASIC - THURSDAYS (A539)\***

APRIL 6, 13, 20, 27, MAY 4, 11, 18, 25, JUNE 1, 8 AT 7-8:30PM  
SELDEN - FAMILY PLACE ROOM B

## **ENGLISH CLASS: INTERMEDIATE - THURSDAYS (A540)\***

APRIL 6, 13, 20, 27, MAY 4, 11, 18, JUNE 1, 8 AT 7-8:30PM  
SELDEN - FAMILY PLACE ROOM A

## **ENGLISH CONVERSATION GROUP - MONDAYS (A559)\***

APRIL 17, 24, MAY 1, 8, 15, 22, JUNE 5, 12 AT 10:30-11:30AM  
SELDEN - SMALL MEETING ROOM

## **WRITING WORKSHOP FOR ESOL STUDENTS - TUESDAYS (A679)**

APRIL 11, 18, 25, MAY 9, 16, 23 AT 7-8:15PM  
SELDEN - COMPUTER PLACE

## **CITIZENSHIP PREPARATION - WEDNESDAYS (A553)\***

APRIL 12, 19, 26, MAY 3, 10, 17, 24, 31 AT 7-8:15PM  
SELDEN - SMALL MEETING ROOM



**LITERACY CELEBRATION (A595)\***  
WEDNESDAY, JUNE 7 AT 6:30-8:00PM  
CENTEREACH - COMMUNITY ROOM



*Centereach - 101 Eastwood Blvd, Centereach; Selden - 575 Middle Country Rd. Selden*

*\*Open to the Public. Patrons should register.*

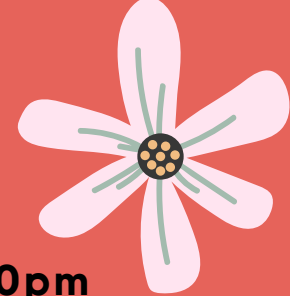
For more information, please contact Amber Gagliardi at [gagliardiamber@mcplibrary.org](mailto:gagliardiamber@mcplibrary.org),  
631-585-9393 ext. 274 or Gilda Ramos at [ramosgilda@mcplibrary.org](mailto:ramosgilda@mcplibrary.org), 631-585-9393 ext. 248

(For Assistance in Spanish and English).





# SPRING 2023 LITERACY FREE SERVICES



**LITERACY HOURS:**  
Wednesdays 6-8:30pm; Saturdays 9:30am-4:30pm



**LITERACY BINGO (A645)\***  
JOIN OTHER STUDENTS OF LITERACY CLASSES FOR A  
FUN NIGHT OF BINGO. ALL WELCOME!  
FRIDAY, APRIL 21 - 6:30-8:00PM - CENTEREACH

**ONE-ON-ONE FINANCIAL COUNSELING - TUESDAYS (A532)**  
**BILINGUAL (ENGLISH/SPANISH ASSISTANCE)**  
APRIL 4, MAY 2, JUNE 6 AT 6PM, OR 6:45PM, OR 7:30PM  
CENTEREACH - WEISS ROOM

**CAREER AND SCHOOL COUNSELING FOR ESOL STUDENTS -**  
**MONDAYS (A533)**  
APRIL 5, MAY 10, JUNE 7 AT 10AM, 11AM OR 12PM  
SELDEN - CONFERENCE ROOM  
APRIL 19, 26, MAY 17, 24 JUNE 14, 21 AT 4:30PM, 5:30PM, OR 6:30PM  
CENTEREACH - WEISS ROOM

**COMPUTER SKILLS & TECH FOR ESOL - MONDAYS (A560)**  
APRIL 10, 17, 24, MAY 1 AT 7-8:15PM  
SELDEN - COMPUTER PLACE

**TECHNOLOGY DROP-IN FOR ELL STUDENTS (A642)\***  
SATURDAYS, APRIL 1, MAY 6 AT 11AM - 1PM  
CENTEREACH - LITERACY CENTER



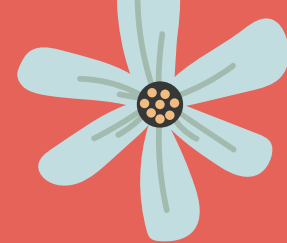
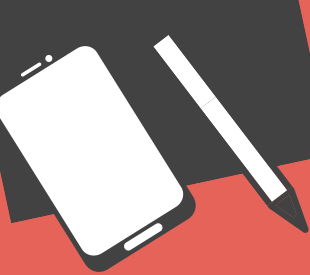
**MUJERES LATINAS (A633)\***  
SATURDAYS, APRIL 8, MAY 13, JUNE 10 AT 12:30PM  
WEDNESDAYS, APRIL 26, MAY 31 AT 6:30PM  
CENTEREACH - COMMUNITY ROOM

*Centereach - 101 Eastwood Blvd, Centereach; Selden - 575 Middle Country Rd. Selden*

*\*Open to the Public. Patrons should register.*

For more information, please contact Amber Gagliardi at [gagliardiamber@mcplibrary.org](mailto:gagliardiamber@mcplibrary.org),  
631-585-9393 ext. 274 or Gilda Ramos at [ramosgilda@mcplibrary.org](mailto:ramosgilda@mcplibrary.org), 631-585-9393 ext. 248.  
(For Assistance in Spanish and English).





# PRIMAVERA 2023 SERVICIOS DE ALFABETIZACIÓN

para el Estudiante Adulto en  
Middle Country Public Library

Horas de Alfabetización: Mie. 6-8:30pm; Sáb. 9:30am-4:30pm

## CLASES DE INGLÉS: BÁSICO - SÁBADOS (A539)\*

ABRIL 8, 15, 22, 29, MAYO 6, 13, 20, 27, JUNIO 3, 10 A LAS 10-11:30AM  
CENTEREACH - FOUNDATION ROOM

## CLASES DE INGLÉS: BÁSICO - JUEVES (A539)\*

ABRIL 6, 13, 20, 27, MAYO 4, 11, 18, 25, JUNIO 1, 8 A LAS 7-8:30PM  
SELDEN - FAMILY PLACE ROOM B

## CLASES DE INGLÉS: INTERMEDIO - JUEVES (A540)\*

ABRIL 6, 13, 20, 27, MAYO 4, 11, 18, JUNIO 1, 8 A LAS 7-8:30PM  
SELDEN - FAMILY PLACE ROOM A

## GRUPO DE CONVERSACIÓN EN INGLÉS - LUNES (A559)\*

ABRIL 17, 24, MAYO 1, 8, 15, 22, JUNIO 5, 12 A LAS 10:30-11:30AM  
SELDEN - SMALL MEETING ROOM

## TALLER DE ESCRITURA PARA ESTUDIANTES ESOL - MARTES (A679)

ABRIL 11, 18, 25, MAYO 9, 16, 23 A LAS 7-8:15PM  
SELDEN - COMPUTER PLACE

## PREPARACIÓN PARA LA CIUDADANÍA -MIÉRCOLES (A553)\*

ABRIL 12, 19, 26, MAYO 3, 10, 17, 24, 31 A LAS 7-8:15PM  
SELDEN - SMALL MEETING ROOM



## CELEBRACIÓN DE ALFABETIZACIÓN

(A595)\*

MIÉRCOLES, JUNIO 7 A LAS 6:30-8:00PM  
CENTERACH - COMMUNITY ROOM



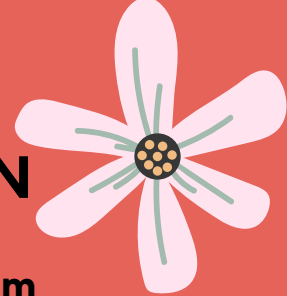
Centereach - 101 Eastwood Blvd, Centereach; Selden - 575 Middle Country Rd. Selden

\*Abierto al público. Los usuarios deben registrarse.

Para obtener más información, comuníquese con Amber Gagliardi en  
gagliardiamber@mcplibrary.org, 631-585-9393 ext. 274 o Gilda Ramos

ramosgilda@mcplibrary.org, 631-585-9393 ext. 248 (Para asistencia en español e inglés).





# PRIMAVERA 2023 SERVICIOS DE ALFABETIZACIÓN

Horas del Centro de Alfabetización:  
Miércoles: 6-8:30pm; Sábados: 9:30am-4:30pm



## BINGO DE ALFABETIZACIÓN (A645)\*

ÚNASE A OTROS ESTUDIANTES DE LAS CLASES DE ALFABETIZACIÓN PARA UNA DIVERTIDA NOCHE DE BINGO. ¡TODOS BIENVENIDOS!  
VIERNES, ABRIL 21 - 6:30-8:00PM - CENTEREACH

## CONSEJERÍA FINANCIERA INDIVIDUAL - MARTES (A532) BILINGÜE (ASISTENCIA EN INGLÉS/ESPAÑOL)

ABRIL 4, MAYO 2, JUNIO 6 A LAS 6PM, Ó 6:45PM, Ó 7:30PM  
CENTEREACH - WEISS ROOM

## CONSEJERÍA PROFESIONAL Y DE ESCUELA ESOL - MIÉRCOLES (A533)

ABRIL 5, MAYO 10, JUNIO 7 A LAS 10AM, 11AM Ó 12PM  
SELDEN - CONFERENCE ROOM

ABRIL 19, 26, MAYO 17, 24 JUNIO 14, 21 A LAS 4:30PM, 5:30PM, Ó 6:30PM  
CENTEREACH - WEISS ROOM

## CLASES DE COMPUTACIÓN Y TECNOLOGÍA PARA ESOL - LUNES (A560)

ABRIL 10, 17, 24, MAYO 1 A LAS 7-8:15PM  
SELDEN - COMPUTER PLACE

## TECNOLOGÍA PARA ESTUDIANTES DE INGLÉS SIN CITA PREVIA (A642)\*

SÁBADOS, ABRIL 1, MAYO 6 A LAS 11AM - 1PM  
CENTEREACH - CENTRO DE ALFABETIZACIÓN



## MUJERES LATINAS (A633)\*

SÁBADOS, ABRIL 8, MAYO 13, JUNIO 10 A LAS 12:30PM  
MIÉRCOLES, ABRIL 26, MAYO 31 A LAS 6:30PM  
CENTEREACH - COMMUNITY ROOM

Centereach - 101 Eastwood Blvd, Centereach; Selden - 575 Middle Country Rd. Selden

\*Abierto al público. Los usuarios deben registrarse.

Para obtener más información, comuníquese con Amber Gagliardi en  
gagliardiamber@mcplibrary.org, 631-585-9393 ext. 274 o Gilda Ramos

ramosgilda@mcplibrary.org, 631-585-9393 ext. 248 (Para asistencia en español e inglés).

