

SPRING 2025 LITERACY FREE SERVICES



for Adult Learners at

Middle Country Public Library

LITERACY HOURS: Wed. 6-8:30pm; Sat. 9:30am-4:30pm

REGISTRATION STARTS FRIDAY, MARCH 28

ENGLISH CLASS: BASIC - THURSDAYS (A928)*

APR. 10, 17, 24, MAY. 1, 8, 15, 22, 29, JUN. 5, 12 AT 7-8:30PM

SELDEN

ENGLISH CLASS: BASIC - SATURDAYS (A928)*

APR. 5, 12, 19, 26, MAY. 3, 10, 17, 24, 31, JUN. 7, 14 AT 10-11:30AM

CENTEREACH

ENGLISH CLASS: BASIC LEVEL II - THURSDAYS (A881)*

APR. 10, 17, 24, MAY. 1, 8, 15, 22, 29, JUN. 5 AT 7-8:30PM

SELDEN

ENGLISH CLASS: INTERMEDIATE - THURSDAYS (A924)*

APR. 10, 17, 24, MAY. 1, 8, 15, 22, 29, JUN. 5, 12 AT 7-8:30PM

SELDEN

ENGLISH CLASS: INTERMEDIATE - SATURDAYS (A924)*

APR. 5, 12, 19, 26, MAY. 3, 10, 17, 24, 31, JUN. 7, 14 AT 10-11:30AM

CENTEREACH

ENGLISH CONVERSATION GROUP - MONDAYS (A926)*

APR. 7, 21, 28, MAY. 5, 12, 19, JUN. 2, 9, 16 AT 10:30-11:30AM

SELDEN

ENGLISH CONVERSATION GROUP - WEDNESDAYS (A926)*

APR. 9, 16, 23, 30, MAY. 7, 14, 21, 28, JUN. 4, 11 AT 6-7PM

CENTEREACH

SIMPLE WRITING SKILLS FOR ESOL - SATURDAYS (A940)*

MAY 3, 10, 17, 24 AT 12-1PM

CENTEREACH

Centereach - 101 Eastwood Blvd, Centereach; Selden - 575 Middle Country Rd. Selden

**Open to the Public. Patrons must pre-register.*

For more information, please contact Amber Gagliardi at gagliardiamber@mcplibrary.org,

631-585-9393 ext. 274 or Gilda Ramos at ramosgilda@mcplibrary.org, 631-585-9393 ext.

248 (For Assistance in Spanish and English).





**SPRING 2025
LITERACY FREE SERVICES
FOR THE ADULT LEARNER
AT MIDDLE COUNTRY PUBLIC LIBRARY
LITERACY HOURS:**

Wednesdays 6-8:30pm; Saturdays 9:30am-4:30pm



**LITERACY CELEBRATION (A934)*
WEDNESDAY, JUNE 18TH AT 6PM-8PM
CENTEREACH**



**CITIZENSHIP PREPARATION - WEDNESDAYS (A932)*
APR. 9, 16, 23, 30, MAY. 7, 21, 28, JUN. 4, 11 AT 7-8:30PM
SELDEN**

**CITIZENSHIP APPLICATION REVIEW - SATURDAYS (A941)*
APR. 5, 26 AT 10:30AM-12PM
SELDEN**

**BASIC COMPUTER SKILLS FOR ESOL STUDENTS - TUESDAYS (A930)
MAY 6, 13, 20, 27 AT 7-8:15PM
CENTEREACH**

**CAREER & SCHOOL COUNSELING FOR ESOL STUDENTS - WEDNESDAYS (A933)
APR. 2, MAY. 7, JUN. 4 AT 10AM, 11AM OR 12PM
SELDEN - CONFERENCE ROOM
APR. 9, 23, MAY 14, 21, JUN. 11, 18 AT 4:30PM, 5:30PM, OR 6:30PM
CENTEREACH - WEISS ROOM**



**MUJERES LATINAS (A927)*
SATURDAYS: APR. 12, MAY 10 AT 12:30-2PM
WEDNESDAYS: APR. 30, MAY 28 AT 6:30-8PM
CENTEREACH - COMMUNITY ROOM**

**NEW programs for children 3 - 12 years old.
Please indicate if you are bringing a child(ren) upon registration.**

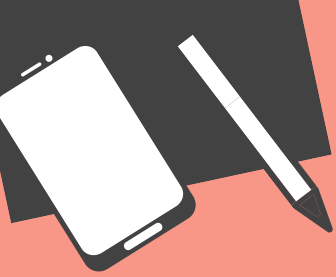
Centereach - 101 Eastwood Blvd, Centereach; Selden - 575 Middle Country Rd., Selden

**Open to the Public. Patrons must pre-register.*

For more information, please contact Amber Gagliardi at gagliardiamber@mcplibrary.org, 631-585-9393 ext. 274 or Gilda Ramos at ramosgilda@mcplibrary.org, 631-585-9393 ext. 248.

(For Assistance in Spanish and English).





**PRIMAVERA 2025
SERVICIOS GRATUITOS DE
ALFABETIZACIÓN
PARA ESTUDIANTES ADULTOS EN
Middle Country Public Library**

HORAS DE ALFABETIZACIÓN: Mié. 6-8:30pm; Sáb. 9:30am-4:30pm

INSCRIPCIÓN COMIENZA EL VIERNES, 28 DE MARZO

CLASE DE INGLÉS: BÁSICO - JUEVES (A928)*

ABR. 10, 17, 24, MAY. 1, 8, 15, 22, 29, JUN. 5, 12 A LAS 7-8:30PM
SELDEN

CLASE DE INGLÉS: BÁSICO - SÁBADOS (A928)*

ABR. 5, 12, 19, 26, MAY. 3, 10, 17, 24, 31, JUN. 7, 14 A LAS 10-11:30AM
CENTEREACH

CLASE DE INGLÉS: BÁSICO NIVEL II - JUEVES (A881)*

ABR. 10, 17, 24, MAY. 1, 8, 15, 22, 29, JUN. 5 A LAS 7-8:30PM
SELDEN

CLASE DE INGLÉS: INTERMEDIO - JUEVES (A924)*

ABR. 10, 17, 24, MAY. 1, 8, 15, 22, 29, JUN. 5, 12 A LAS 7-8:30PM
SELDEN

CLASE DE INGLÉS: INTERMEDIO - SÁBADOS (A924)*

ABR. 5, 12, 19, 26, MAY 3, 10, 17, 24, 31, JUN. 7, 14 A LAS 10-11:30AM
CENTEREACH

GRUPO DE CONVERSACIÓN EN INGLÉS - LUNES (A926)*

ABR. 7, 21, 28, MAY. 5, 12, 19, JUN. 2, 9, 16 A LAS 10:30-11:30AM
SELDEN

GRUPO DE CONVERSACIÓN - MIÉRCOLES (A926)*

ABR. 9, 16, 23, 30, MAY. 7, 14, 21, 28, JUN. 4, 11 A LAS 6-7PM
CENTEREACH

DESTREZAS DE ESCRITURA SIMPLES ESOL - SÁBADOS (A940)*

MAY. 3, 10, 17, 24 A LAS 12-1PM
CENTEREACH

Centereach - 101 Eastwood Blvd, Centereach; Selden - 575 Middle Country Rd., Selden

**Abierto al público. Los usuarios deben inscribirse por adelantado.*

Para más información, comuníquese con Amber Gagliardi en

gagliardiamber@mcplibrary.org, 631-585-9393 ext. 274 o Gilda Ramos en

ramosgilda@mcplibrary.org, 631-585-9393 ext. 248 (Para asistencia en español e inglés).





**PRIMAVERA 2025
SERVICIOS GRATUITOS DE
ALFABETIZACIÓN**

**PARA ESTUDIANTES ADULTOS EN
MIDDLE COUNTRY PUBLIC LIBRARY**

HORAS DE ALFABETIZACIÓN: Mié. 6-8:30pm; Sáb. 9:30am-4:30pm

**CELEBRACIÓN DE
ALFABETIZACIÓN (A934)*
MIÉRCOLES, 18 DE JUNIO A LAS 6PM-8PM
CENTEREACH**

**PREPARACIÓN PARA LA CIUDADANÍA - MIÉRCOLES (A932)*
ABR. 9, 16, 23, 30, MAY. 7, 21, 28, JUN. 4, 11 A LAS 7-8:30PM
SELDEN**

**REVISIÓN DE LA SOLICITUD DE CIUDADANÍA - SÁBADOS (A941)*
ABR. 5, 26 A LAS 10:30AM-12PM
SELDEN**

**DESTREZAS BÁSICAS DE COMPUTADORAS ESOL - MARTES (A930)
MAY. 6, 13, 20, 27 A LAS 7-8:15PM
CENTEREACH**

**CONSEJERÍA PROFESIONAL Y ESCOLAR - MIÉRCOLES (A933)
ABR. 2, MAY. 7, JUN. 4 A LAS 10AM, 11AM O 12PM
SELDEN - CONFERENCE ROOM
ABR. 9, 23, MAY. 14, 21, JUN. 11, 18 A LAS 4:30PM, 5:30PM, O 6:30PM
CENTEREACH - WEISS ROOM**



**MUJERES LATINAS (A927)*
SÁBADOS: ABR. 12, MAY. 10 A LAS 12:30-2PM
MIÉRCOLES: ABR. 30, MAY. 28 A LAS 6:30-8PM
CENTEREACH - COMMUNITY ROOM
NUEVOS programas para niños de 3-12 años.**

Indique si traerá a un niño(s) al momento de registrarse.

Centereach - 101 Eastwood Blvd, Centereach; Selden - 575 Middle Country Rd., Selden

**Abierto al público. Los usuarios deben inscribirse por adelantado.*

**Para más información, comuníquese con Amber Gagliardi en gagliardiamber@mcplibrary.org,
631-585-9393 ext. 274 o con Gilda Ramos en ramosgilda@mcplibrary.org, 631-585-9393 ext.
248. (Para asistencia en español/inglés).**

